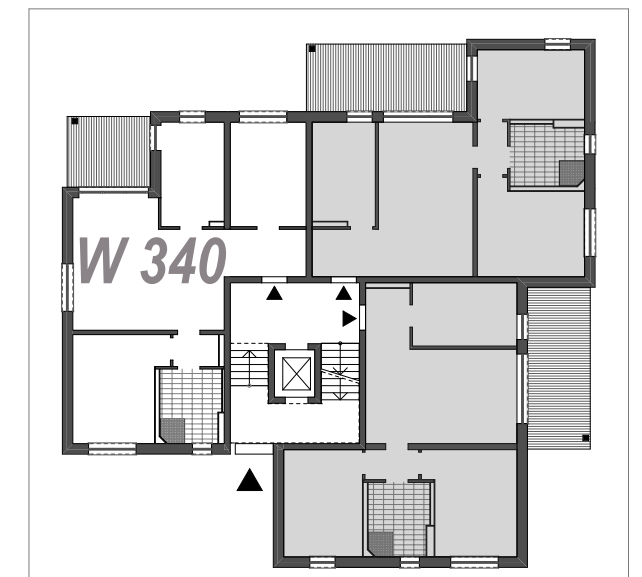
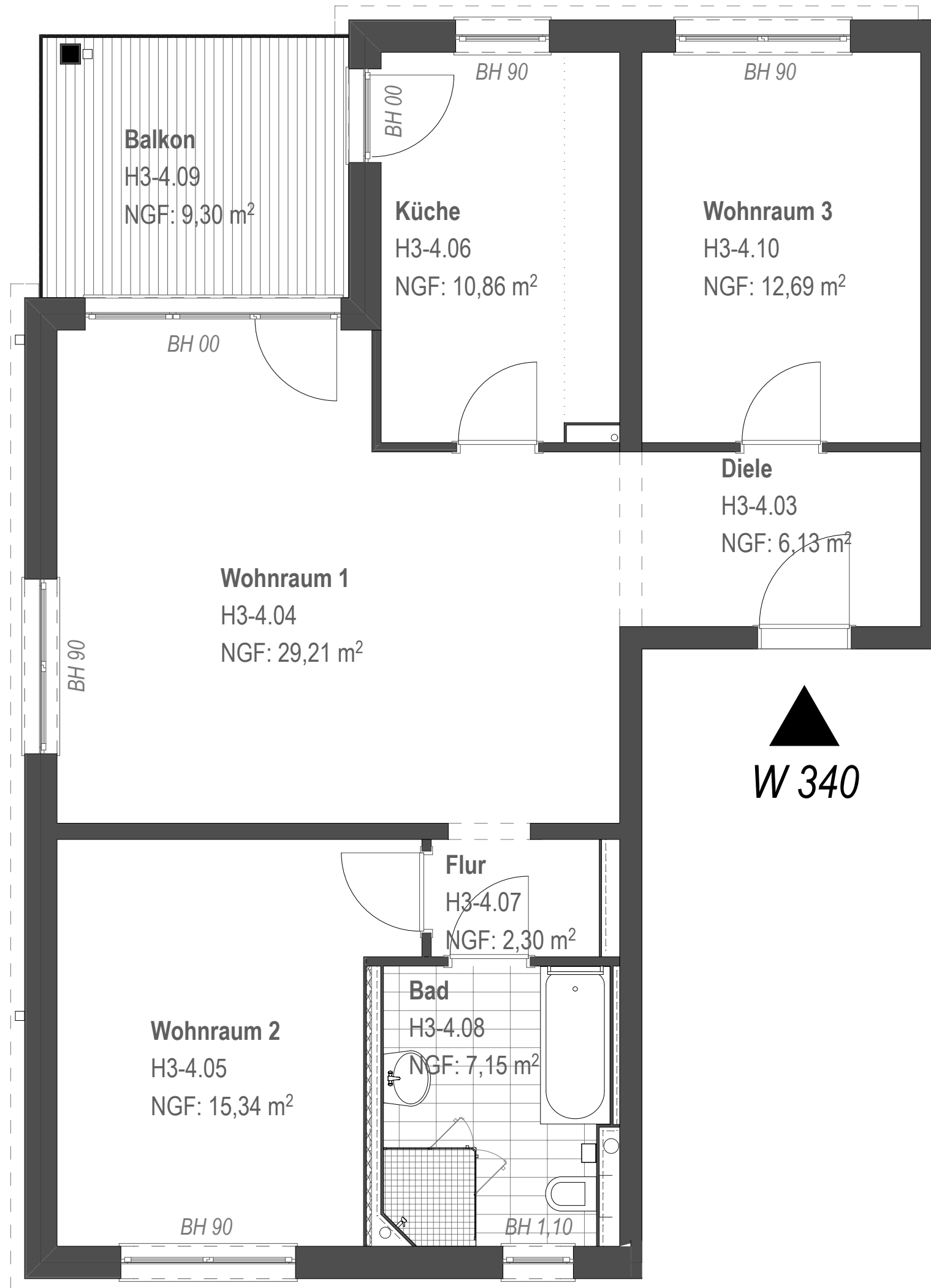


$W\ 340_3\ WR - 83,68m^2 + (9,30/2m^2) = 88,33m^2$



Erik Weber Immobilien-Marketing e.K.

Bebauung Grundstück Muskauer Straße 3 in 03130 Spremberg

**HAUS 3 - 3.OG W 340**

12.04.2022 WOHNUNGEN M 1:50 (A3)

H3<sub>3.OG</sub> W-340<sup>3R-WE</sup>

Richter Altmann Jyrch Architekten BDA Gerichtsplatz 7 03046 Cottbus T 0355 380980 F 0355 3809888 info@raj-cottbus.de