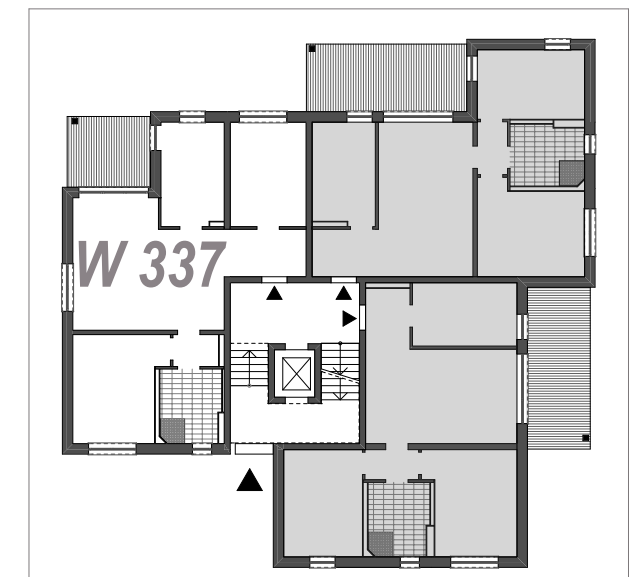
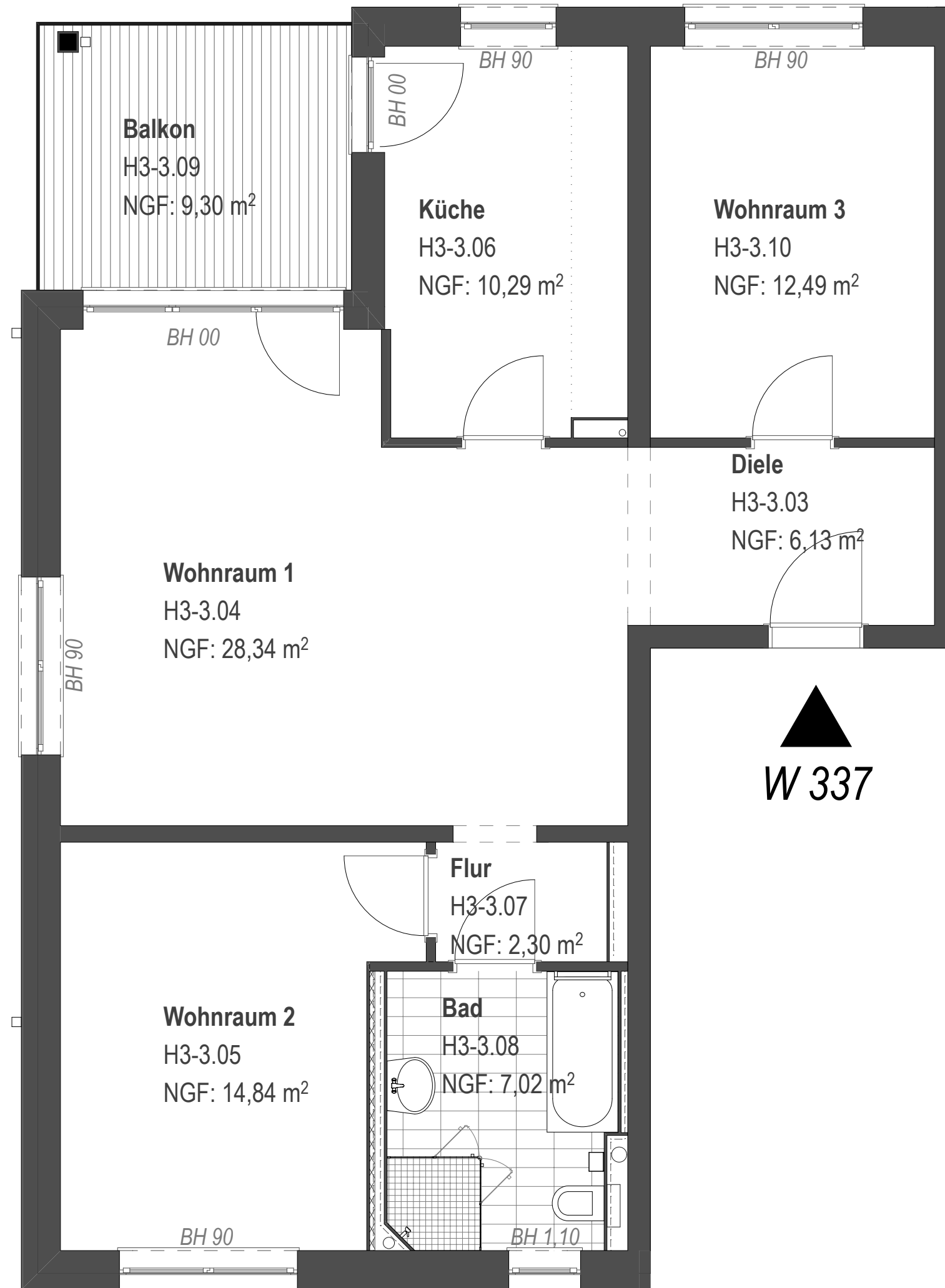


$W\ 337_{3WR} - 81,41m^2 + (9,30/2m^2) = 86,06m^2$



Erik Weber Immobilien-Marketing e.K.

Bebauung Grundstück Muskauer Straße 3 in 03130 Spremberg

HAUS 3 - 2.OG W 337

12.04.2022 WOHNUNGEN M 1:50 (A3)

H3_{2.OG} W-337^{3R-WE}

Richter Altmann Jyrch Architekten BDA Gerichtsplatz 7 03046 Cottbus T 0355 380980 F 0355 3809888 info@raj-cottbus.de