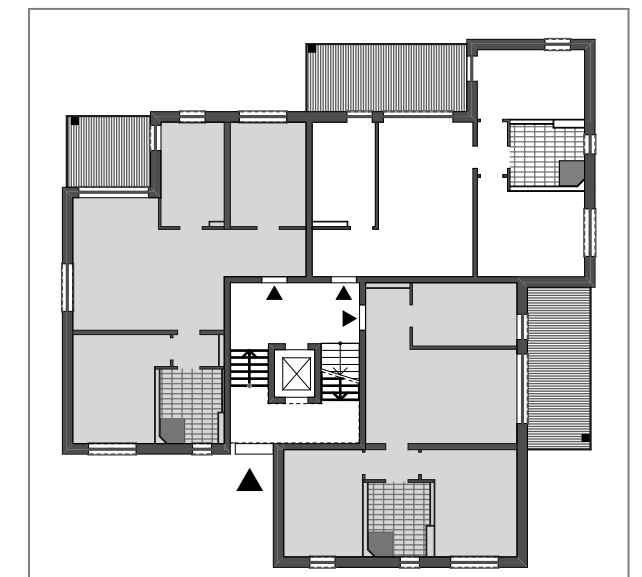


W 105 _{3WR} - 75,26m² + (17,09/2m²) = 83,81m²

▲
W 105



Erik Weber Immobilien-Marketing e.K. - Raum für's Leben
 Bebauungsvorschlag Grundstück Muskauer Straße 3 in 03130 Spremberg

HAUS 1 - 1.OG W 5