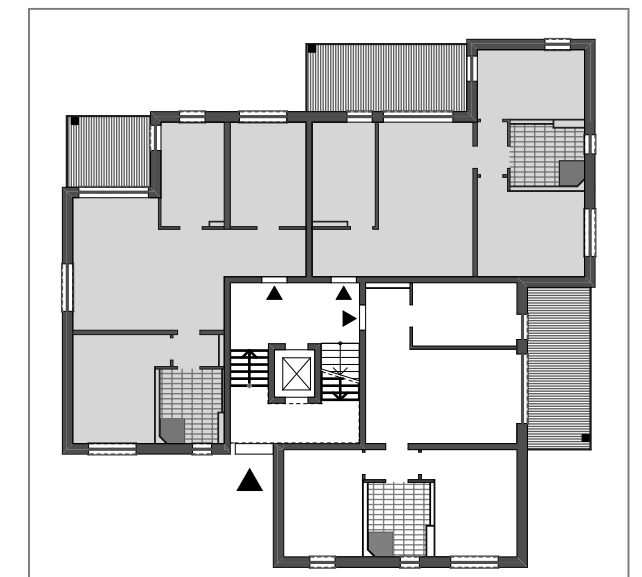


$$W 103 \quad 3WR - 75,72m^2 + (16,07/2m^2) = 83,76m^2$$



Erik Weber Immobilien-Marketing e.K. - Raum für's Leben  
 Bebauungsvorschlag Grundstück Muskauer Straße 3 in 03130 Spremberg

## HAUS 1 - EG W3