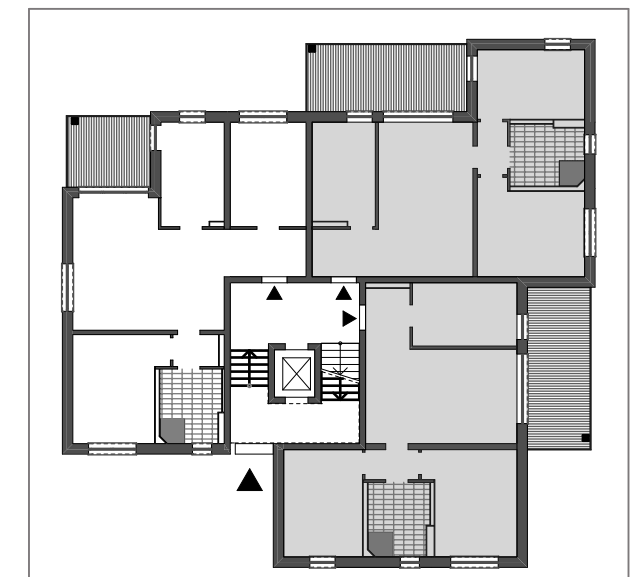
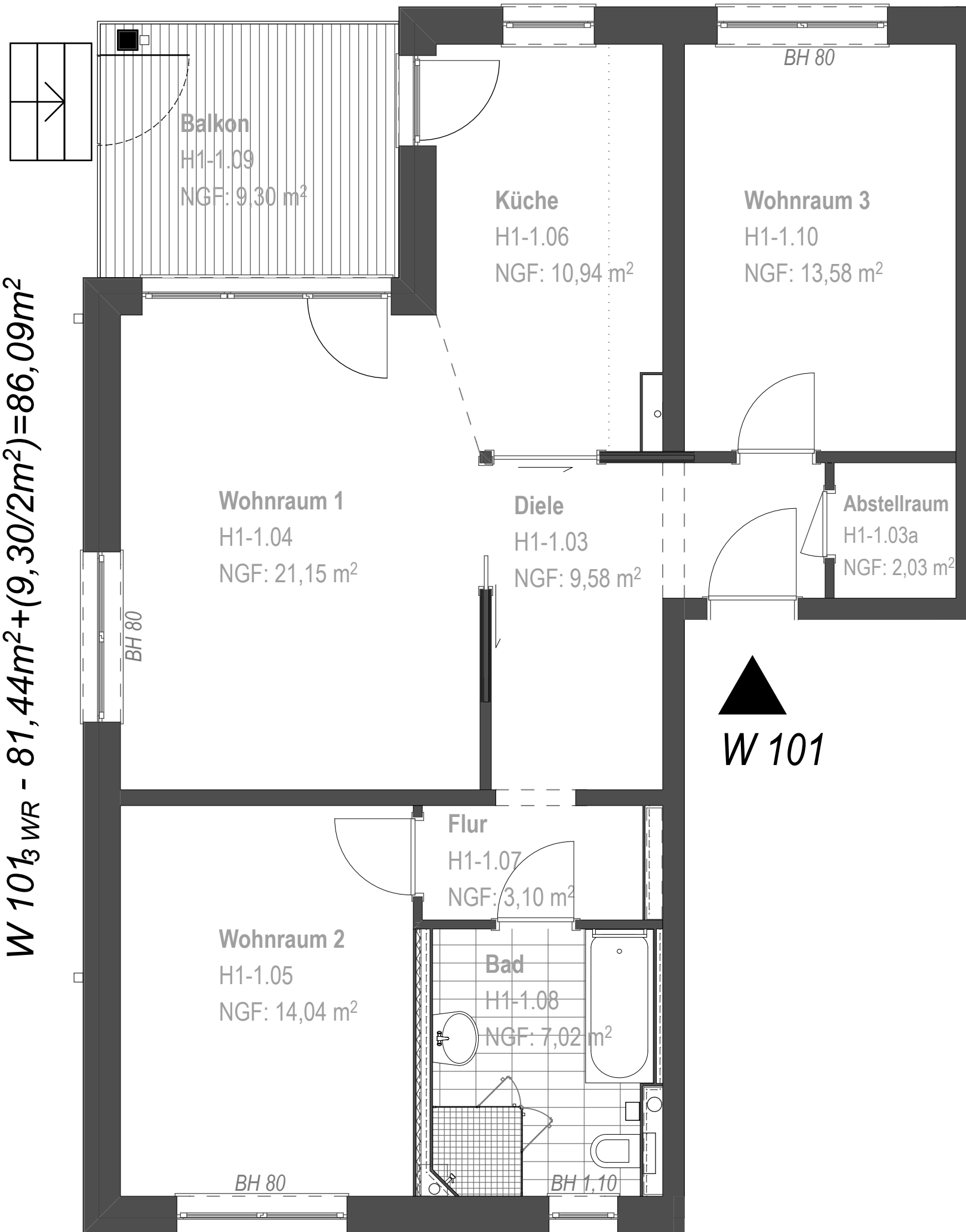


$W 101_{3WR} - 81,44m^2 + (9,30/2m^2) = 86,09m^2$



Erik Weber Immobilien-Marketing e.K. - Raum für's Leben
 Bebauungsvorschlag Grundstück Muskauer Straße 3 in 03130 Spremberg

HAUS 1 - EG W 1

17.03.2021 Konzept

M 1:50 (A3)

H1_{EG} W-1^{3R-WE}